

# OUR TABLET STAND IS GREATLY IMPROVING COMMUNICATION WITH PATIENTS

**We Can Help Your Medical Center Too!**



LEVOs are playing a critical role in assisting the medical community during the pandemic by way of telehealth. Our LEVO tablet stand cart extends well over your patient's bed and articulates to position a tablet exactly where you'd like. Doctors and nurses can use their own devices to video chat / telehealth with patients without the need to wear masks, gloves, or other precious protective gear. It's another layer of protection for your medical staff and also saves PPE.



#33768 - Consumer Deluxe

Levo Carts Are  
Available  
In 3  
Options



#33789 - Commercial Deluxe



#33773- Commercial Deluxe WITH  
USB-C Charging Port

## #33768 CONSUMER DELUXE

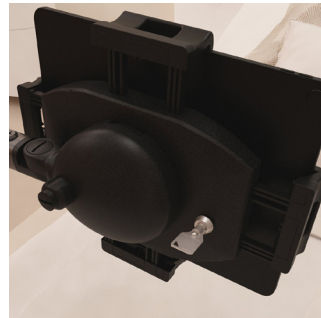


Consumer grade casters

## #33789 COMMERCIAL DELUXE



**Hourglass shaped base** maneuvers better around other furniture. Standard 11mm diameter caster mounts (Easy to change to different caster styles).

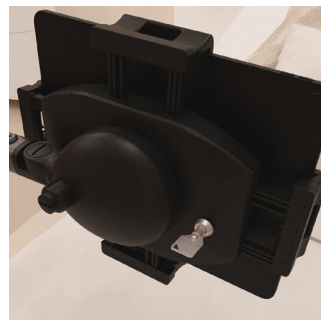


**Key Locking Dual Clamp** provides security from tablet theft.

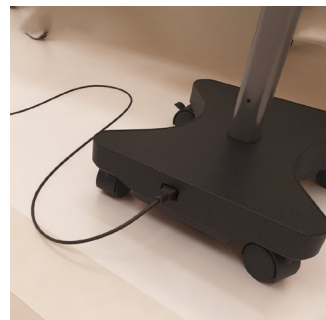
## #33773 COMMERCIAL DELUXE WITH POWER



**Hourglass shaped base** maneuvers better around other furniture. Standard 11mm diameter caster mounts (Easy to change to different caster styles).



**Key Locking Dual Clamp** provides security from tablet theft.



**Hospital grade AC power**



**60 watt USB-C charging port**

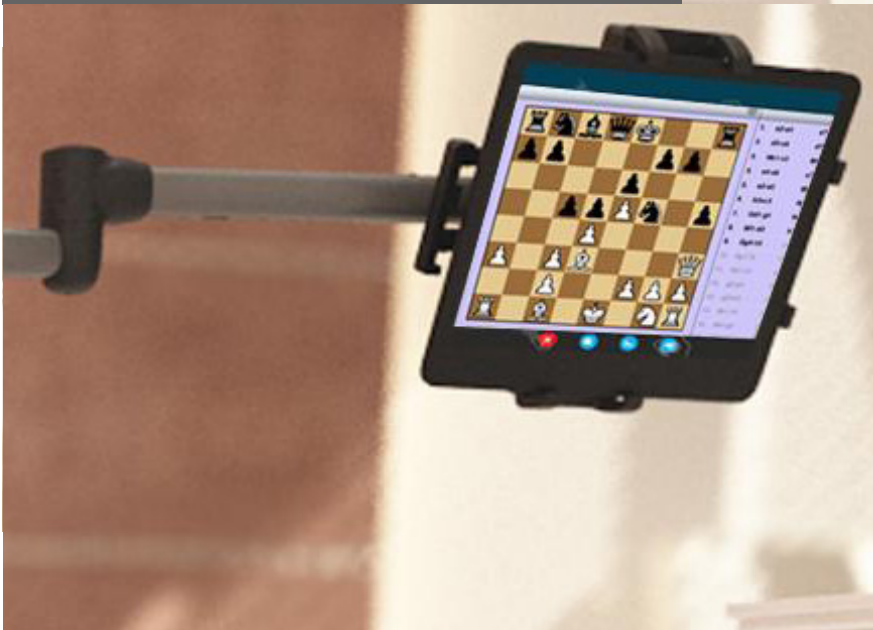


## Telehealth To Protect Doctors & Nurses

Whether you're a doctor, nurse, or other medical professional, our LEVO tablet stand cart can help protect you from constant exposure of viral illnesses. LEVOs are playing a critical role in assisting the medical community during the pandemic by way of telehealth. Our LEVO tablet stand cart extends well over your patient's bed and articulates to position a tablet exactly where you'd like. Doctors and nurses can use their own devices to video chat / telehealth with patients without the need to wear masks, gloves, or other precious protective gear. It's another layer of protection for your medical staff and also saves PPE.

## Time Saving & Convenient

Telehealth video chatting with the help of LEVO will save your staff time. While standing bedside, doctors and their patients can video chat with family members to update them on the patient's progress. Best of all, it's very efficient for medical staff to be able to check on their patient and update the family all in one visit.



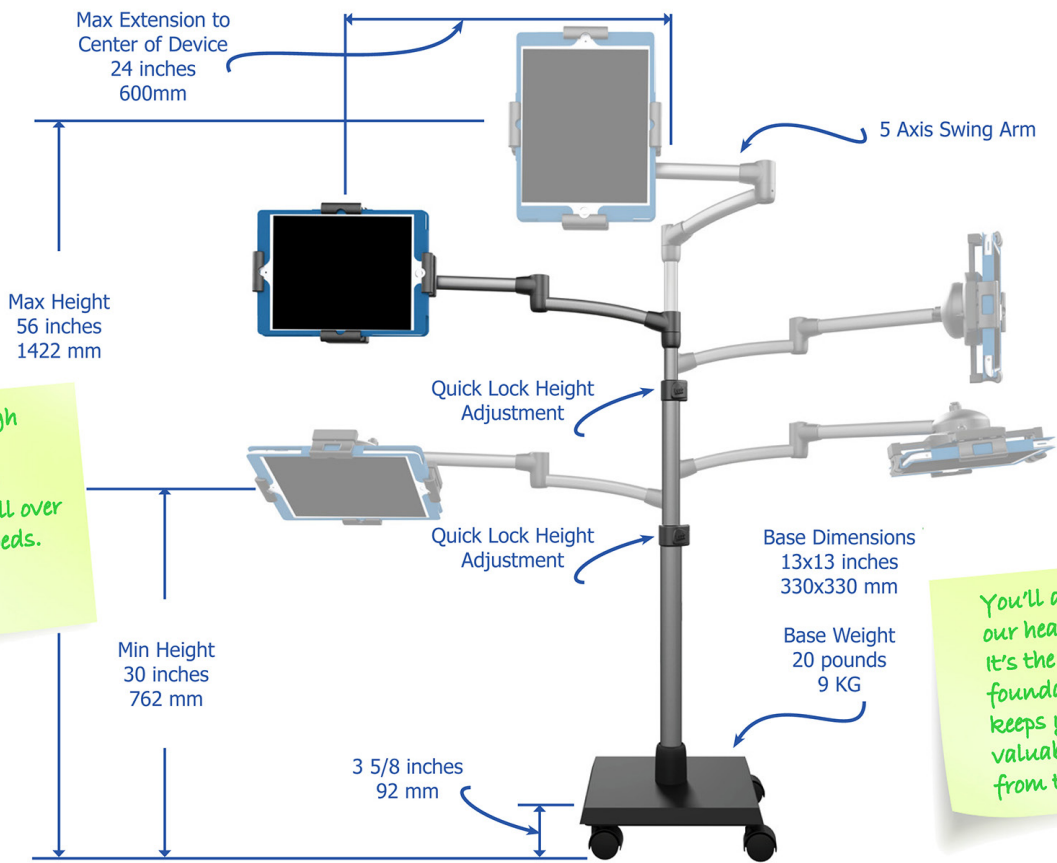
## Patient Comfort & Entertainment

Our LEVO tablet stand is beneficial beyond medical staff convenience. Bedridden patients can suffer from loneliness and boredom, which can result in too much time sleeping and not enough time healing. With a LEVO and a tablet, patients will be stimulated and entertained for hours. LEVO extends well over beds and freely articulates to perfectly position tablets from either side of the bed. It safely holds tablets allowing your patients to watch movies, play games, and even get some work done. Best of all, your patients can comfortably connect with loved ones. With this much stimulation, you might hear less of the call button - saving you time and energy!

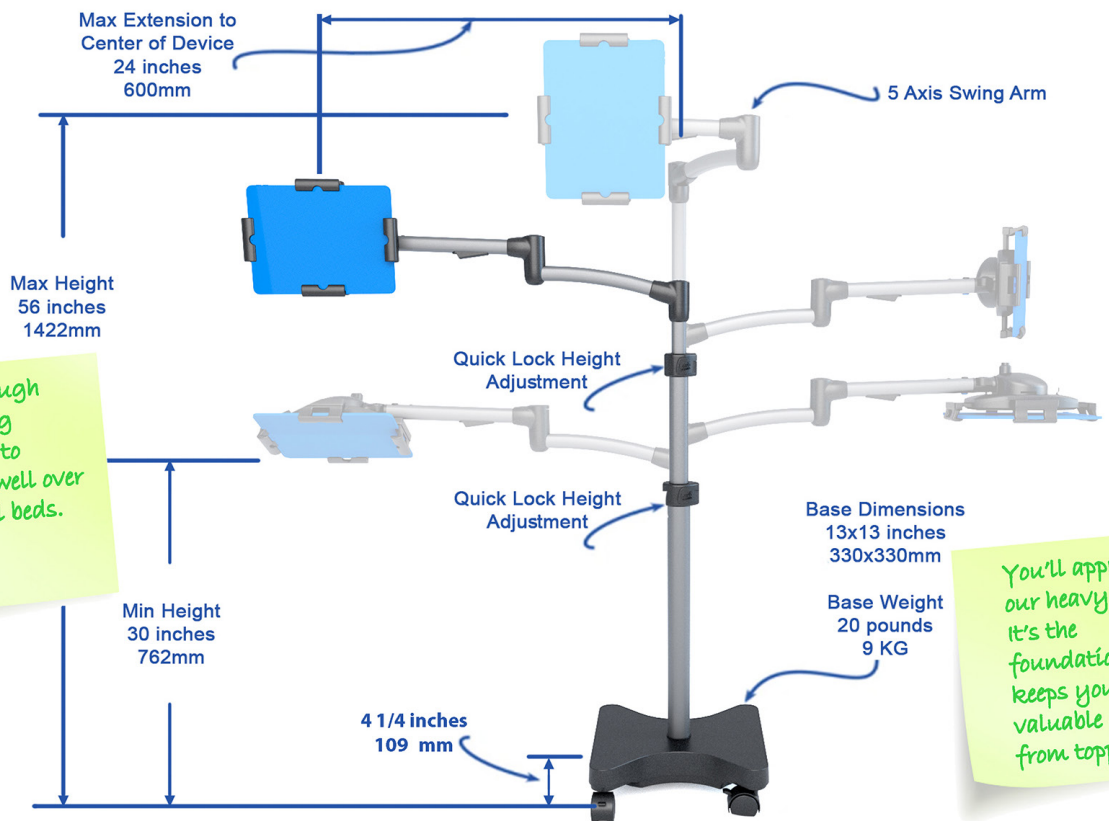


0428 173 277

# #33768



# #33789 & 33773





#33768 - Consumer Deluxe



#33789 - Commercial Deluxe



#33773- Commercial Deluxe WITH  
USB-C Charging Port



